

780 S Warrington Rd
Des Plaines



@properties®



FRONT ENTRANCE



FOYER



LIVING ROOM



DINING ROOM



DINING ROOM / KITCHEN



KITCHEN



KITCHEN



SUNROOM



SUNROOM



FAMILY ROOM



FAMILY ROOM



POWDER ROOM



OPEN TO BELOW



BATHROOM



PRIMARY BEDROOM



BEDROOM



BEDROOM



BEDROOM



BEDROOM



BEDROOM



BEDROOM



BEDROOM



BEDROOM



RECREATION ROOM



RECREATION ROOM



KITCHENETTE



BATHROOM



LAUNDRY



DECK



BACKYARD



BACKYARD



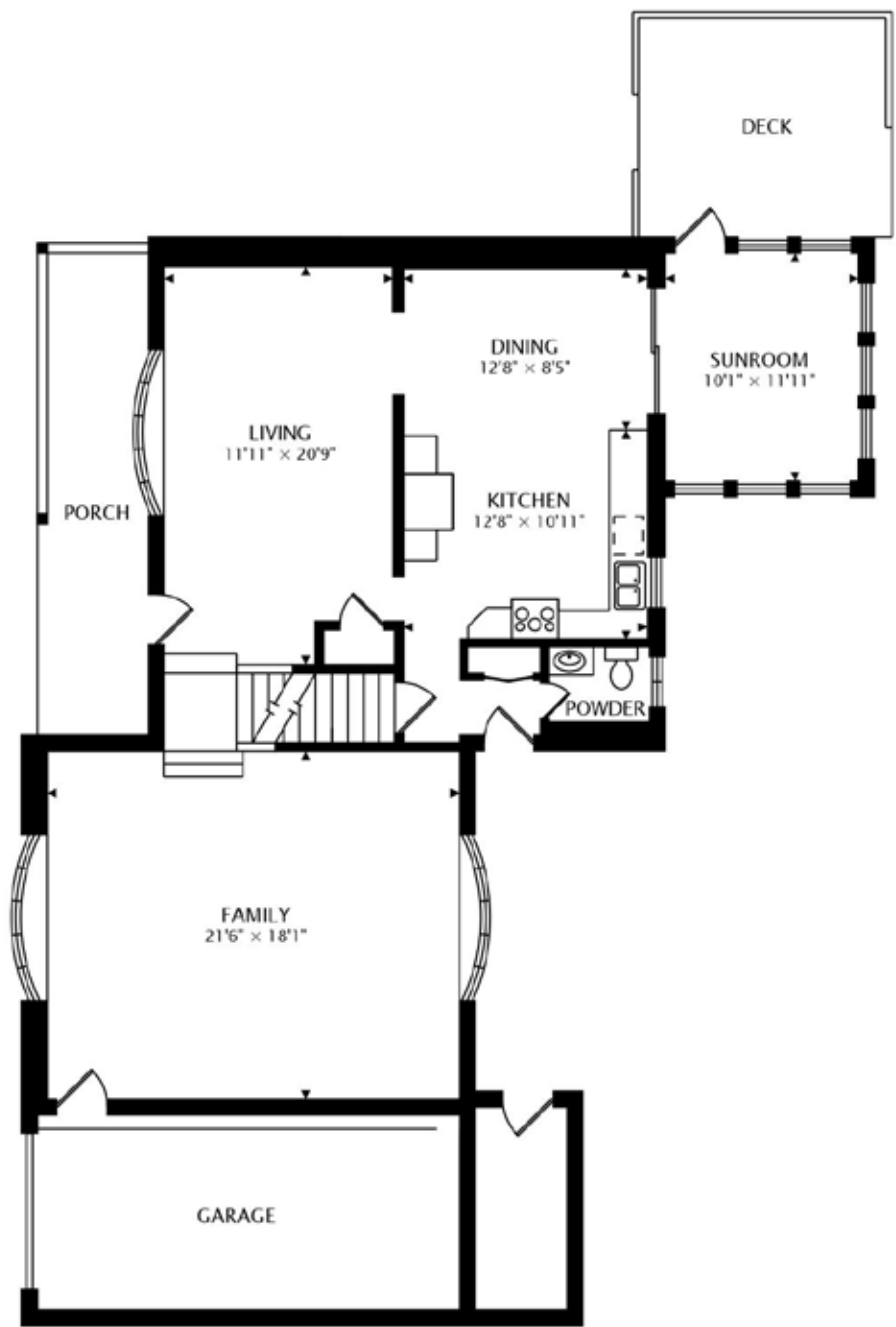
BACKYARD



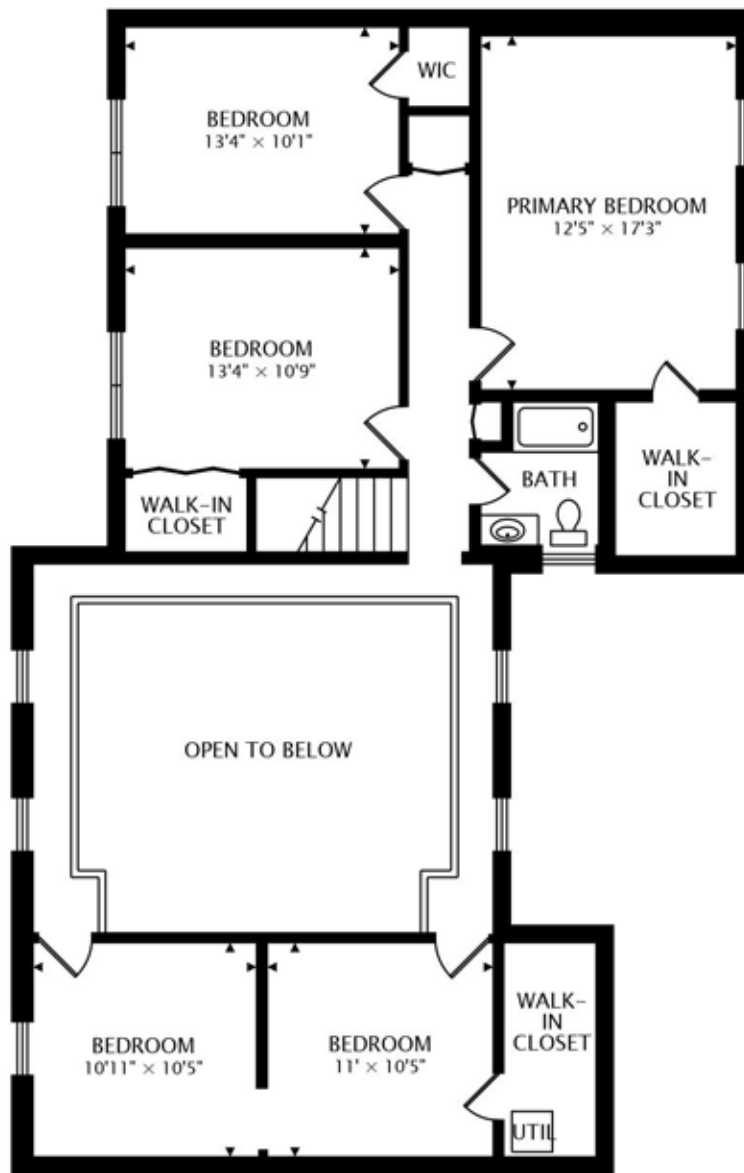
BACKYARD



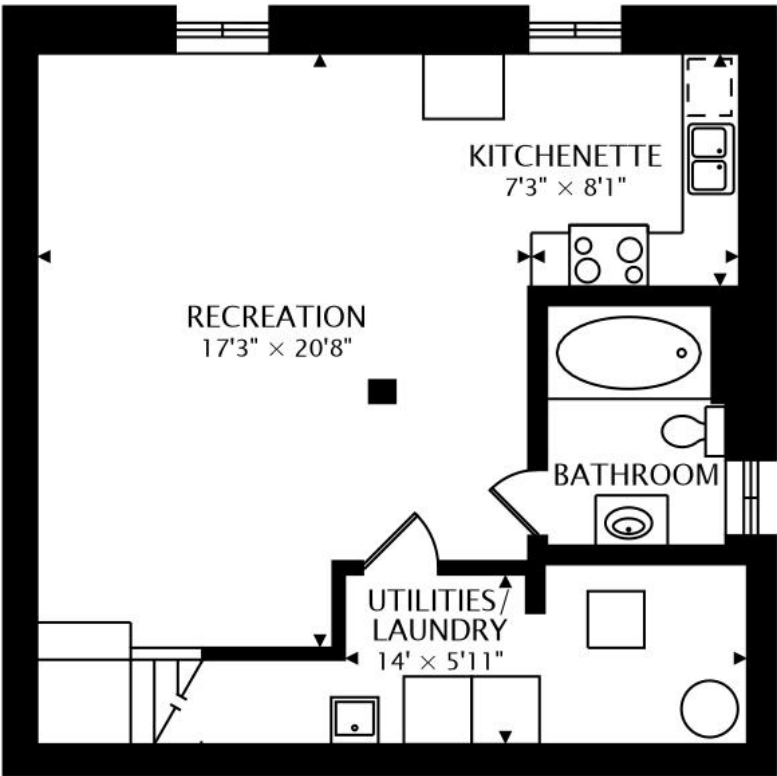
BACKYARD



MAIN LEVEL



SECOND LEVEL



LOWER LEVEL

FEATURES

Main Level:

Living Room, Dining Room, Kitchen, Family Room, Powder Room

- Living Room: Laminate flooring, bay window, guest coat closet
- Dining Room: Laminate flooring, crown molding, light fixture, sliding door to sunroom
- Sunporch: Carpeted flooring, ceiling fan
- Kitchen: Ceramic tile flooring, granite countertops, subway tile backsplash, soft close cabinetry, LG refrigerator, whirlpool 5 burner gas oven/range, vent hood, double stainless sink with brushed nickel plumbing fixture, Whirlpool stainless steel dishwasher
- Family Room: 2 story family room, wood laminate flooring
- Powder room: Ceramic tile flooring, neutral vanity, Moen brushed nickel plumbing fixture

Second Level:

Primary Bedroom, Hall Bathroom, Bedrooms Two, Three, Four and Five 2 hall linen closets

- Primary Bedroom: Carpeted flooring, wood paneling, ceiling light fan fixture, built in bookshelf, walk in closet
- Bedroom Two: Carpeted flooring, ceiling light fan fixture, walk in closet
- Bedroom Three: Carpeted flooring, ceiling light fan fixture, walk in closet
- Bedrooms Four and Five: Carpeted flooring, closet with 2nd furnace
- Hall bathroom: Tile flooring, vanity with granite countertops and chrome plumbing fixture, medicine cabinet, Kohler commode, shower/tub combo with ceramic tile

Basement:

Recreation Room, Bathroom, Laundry Room

- Recreation: Ceramic tile flooring, recessed lighting, ceiling fan, crown molding,
- Kitchen area with ceramic tile flooring, honed granite countertops, backsplash, Maytag oven/range, Pac air vent hood, double sink with brushed nickel plumbing fixture, GE dishwasher
- Bathroom: Granite flooring, vanity with granite countertop with delta brushed nickel plumbing fixture, medicine cabinet, Jacuzzi tub combo shower
- Laundry room: Maytag washer/dryer, utility sink



CONNIE NADIA DORNAN
TOP 1% REALTOR NATIONWIDE
8 TIME CHICAGO MAGAZINE FIVE STAR PROFESSIONAL AWARD WINNER
CLHMS, SFR, E-PRO, QSC, & REO
M: 847.208.1397 | O: 847.998.0200
Connie@ConnieDornan.com



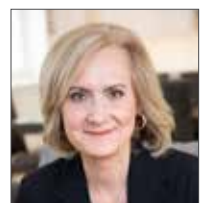
All specifications are subject to change without notice and may vary on each home

ADDITIONAL FEATURES

- Sump pump with battery backup
- GE hot water heater 2004 50 gallon
- Lennox furnace with Aprilaire humidifier
- Wood deck
- Fully fenced yard
- Roof and siding replaced 2 months ago
- All new copper pipes, 3 months ago
- New furnace, this year
- Basement remodeled, last year. Kitchen remodeled 3 yrs ago. Driveway and side/rear walkway 2 years ago.
- Sunroom, remodeled 2 yrs ago
- Water heater 10 years old
- Kitchen window and the powder room window 2016
- Florida room windows and basement windows 2018



CONNIE NADIA DORNAN
TOP 1% REALTOR NATIONWIDE
8 TIME CHICAGO MAGAZINE FIVE STAR PROFESSIONAL AWARD WINNER
CLHMS, SFR, E-PRO, QSC, & REO
M: 847.208.1397 | O: 847.998.0200
Connie@ConnieDornan.com



All specifications are subject to change without notice and may vary on each home

History of Des Plaines

Des Plaines River Valley

The Des Plaines River Valley was occupied by the Potawatomi, Ottawa, and Chippewa Indians immediately prior to the arrival of the first settlers from the east during the second quarter of the 19th century. Following the Treaty of Chicago in 1833, pioneers from New England and New York began farming the prairie that would eventually become Des Plaines. German immigrants, seeking economic and political freedom, arrived in the area in large numbers during the 1840s and 1850s. German was the second language in many Des Plaines homes and churches.



The present site of Des Plaines was determined during the 1850s by the Illinois and Wisconsin Land Company, a group of land speculators engaged in building a railroad from Chicago to Janesville, Wisconsin. In 1857, when the Chicago, St. Paul, and Fond du lac Railroad introduced daily train service between Janesville and Chicago, a subdivision plat was recorded for the "Town of Rand," named for Socrates Rand, one of the first settlers in the area. The CSP and FDL Railroad, which was purchased by the Chicago and North Western in 1859, named its station here Des Plaines and, in 1869, the name of the subdivision was changed to correspond with the name of the station.

Incorporation

The Village of Des Plaines was incorporated in 1869 and the federal census of the following year shows that the village had grown to a population of 800. Des Plaines was reincorporated in 1873 and was officially organized in 1874 with the election of the first village board. Franklin Whitcomb, a local brick manufacturer, was the first village president.



In addition to the railroad, local farmers were drawn to the steam-powered grist mill next to the Des Plaines River in what is now downtown Des Plaines. Constructed by the railroad developers in 1852 to cut ties from the forested belt of burr oak and hickory along the river, the mill was purchased by Socrates Rand who converted it to a grist mill. It has since been demolished. The downtown business area of Des Plaines began to grow on either side of the tracks near the mill and at the point where trains would naturally stop to take on water.

City Form of Government

Des Plaines was a thriving community when, in 1925, voters approved a proposal to adopt the present city form of government, with H.T. Bennet as the first mayor. During the same year the Village of Riverview, to the south of Des Plaines, was annexed, adding land for industry and homes.

The city annexed the Orchard Place area in 1956. Known in 1881 as Farwell, Illinois, Orchard Place developed simultaneously with Des Plaines and Riverview until much of it was razed during construction of the Northwest Tollway.

Period of Growth

Following World War II, movement of people from Chicago, plus the development of Chicago-O'Hare International Airport at Orchard Place, signaled a great period of growth for Des Plaines. The population jumped from the prewar 9,000 to over 50,000.



Today

Over 30 churches representing every major denomination are now in the City. Additionally, the City's elementary and secondary schools are nationally acclaimed. The art and theater guilds, the community concert series, a fine public library system, and a historical museum are true indications of the cultural growth of the community. A progressive park district accommodates the recreational needs of all ages.

During the past two decades industrial growth has also been phenomenal, the City having become a raw materials and finished products distributing center as well as the headquarters of several major corporations. The combination of superior air transportation, good railroads, and a network of expressways have fostered the full development of Des Plaines. Today, Des Plaines is indeed a progressive city characterized by fine residences, industrial opportunities, and an abundance of business and trade facilities.



Terrace Elementary School
735 South Westgate Rd.
Des Plaines, IL
K-5th grade

Chippewa Middle School
123 N. 8th Avenue
Des Plaines, IL
6th-8th Grades



Maine West High School
1755 South Wolf Rd.
Des Plaines, IL

Maine West High School lies 40 minutes northwest of downtown Chicago in a suburban area serving most of Des Plaines and a portion of Rosemont. Maine West educates students who speak 53 languages and 54.3% of students live in homes where English is not the primary language. The student population is 43.3% white, 3.4% Black, 39.7% Latinx and 11.3% Asian. The enrollment is 2,078 and the average class size is 21. Maine West provides a comprehensive, innovative and rigorous public education program. Curriculum offerings at Maine West are extensive, with over 200 courses offered in 10 departments, including the fine arts, world language and career technical education. Maine West High School lies 40 minutes northwest of downtown Chicago in a suburban area serving most of Des Plaines and a portion of Rosemont. Maine West educates students who speak 53 languages and 54.3% of students live in homes where English is not the primary language. The student population is 43.3% white, 3.4% Black, 39.7% Latinx and 11.3% Asian. The enrollment is 2,078 and the average class size is 21. Maine West provides a comprehensive, innovative and rigorous public education program.

Recreation

Park Districts

Two park districts and the Cook County Forest Preserve maintain approximately 700 acres of parks and open space. Picturesque lakes, adventure miniature golf, family aquatic centers, state-of-the-art fitness centers, bike and hiking paths, 18-hole golf courses, horseback riding trails, and the world's largest nonresidential YMCA provide outstanding leisure and recreational service to the community.

Des Plaines Park District

This district includes:

- 18-hole par 3 golf course
- 18-hole adventure (miniature) golf course
- 37 park sites
- Bike trails
- Boating
- Fitness center / health club
- Ice skating
- Lake Park
- Mystic Waters family aquatic center with water slides, lazy river, leisure pool, and drop slides
- Offering 73 acres for fishing
- Over 300 recreational programs and special events
- Picnicking and golfing
- Theatre
- Three swimming pools

Be sure to call 847-391-5700 or visit the Des Plaines Park District website for more information on recreational programs, facilities, and parks services.

Mt. Prospect Park District

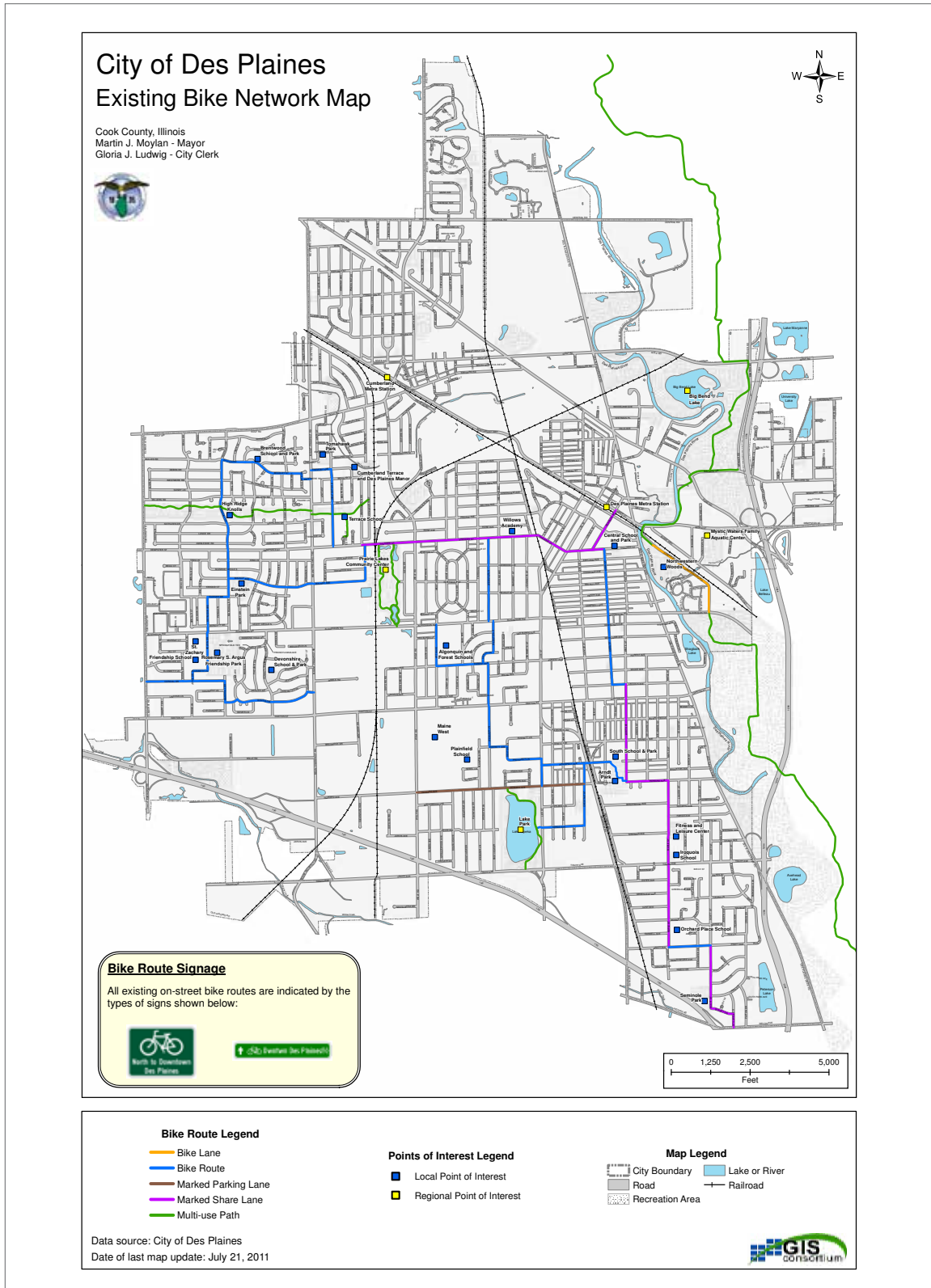
Serving residents west of Mt. Prospect Road, please call 847-266-5380 for any questions or more information on any of the following services.

- 18-hole golf course
- 29 park sites
- Big Surf wave pool
- Bike trails
- Friendship Park Conservatory
- Fitness center
- Ice skating
- Over 300 recreational programs and special events
- Three swimming pools
- Tennis courts

Cook County Forest Preserve

The Cook County Forest Preserves offers 66,747 acres throughout the Chicago-land area including:

- 10 golf courses
- 6 nature centers
- 52 miles of bicycle trails
- 200 miles of hiking / horseback riding trails
- 2,210 picnic areas
- Special areas offering sledding, fishing, boating, and swimming





About the Golf Center

Nestled on nearly 40 acres of mature land, the Golf Center is owned and operated by the Des Plaines Park District, and is open 364 days a year.

Driving Range

No need to head south for the winter to stay on top of your game: check out Chicagoland's premier golf practice facility for optimal in and off-season practicing. Consistently ranked one of the Top 50 Stand Alone Ranges in America, the Golf Center features a three-tiered, year-round driving range with 80 lighted & heated hitting stations, and a fully automated tee-up system.

Here's why we're the finest practice facility in the Midwest

Fully adjustable, computerized, automated tee-up system.

Tee heights up to 2". *Hit your largest club heads!*

Three tiers, with 80 heated, covered hitting stations. *Practice in comfort year-round.*

Over 300 yards of outdoor landing area, so you can track the full flight of every shot.

You're not bangin' balls into walls at the Golf Center!

Fully-lighted driving range.

Multiple target greens and easy to read yardage markers.

New balls & mats added frequently. *Featuring Srixon range balls!*

Reloadable, permanent Range Card allows you to bypass the front desk and get right out onto the driving range.

Computerized Range Card system lets you hit just the number of balls you want to on each visit.

Consistently awarded the **Top 50 Stand Alone Ranges in America**.

*Voted Daily Herald 2012 Readers' Choice **Best Driving Range**.*

GolfTEC. Certified PGA instruction. *Proven path. Proven results.*

Club Casa Restaurant & Sports Bar, open every day.

Dream Golf Pro Shop. Major brands, expert club fitting.

Par-3, Nine Hole Course

This beautiful Rick Jacobson designed course can really test your game. With holes ranging from 80 to 200 yards and a variety of hazards - including a lake, berms, hills & prairie grass - this course has something for golfers of all skill levels.

Playable in just an hour and a half, the course is perfect for a quick game at lunch, an early morning outing or a summer evening brush up. This is the only fully-lighted course in the Chicagoland area; you can book late tee times all season, which makes it easy to fit a game into your schedule.

Course Features

Fully lighted for night play

Daily fees: Residents just \$10 weekdays, \$13 after 5pm and on weekends. Non-residents: \$12/\$16.

Par-3 is playable in just an hour and a half.

Challenging enough for all skill levels.

Perfect for leagues and company outings.

Short Game Practice Area

The PGA GolfTEC instructors will tell you the best way to improve your score is to have a very good short game. Statistics show that 65% of all shots are inside 100 yards, with 43% of those shots involving putting. Spend some time in our short game area each day, and you'll see the improvement in your chip shots, bunker shots, and putts.

Short Game Area Features

1½ acres of beautifully sculpted practice area.

Two large practice greens.

Multiple sand bunkers.

Hit pitch shots from up to 60 yards away.

Balls are supplied.

Separate putting green.

\$7 daily fee, *with in & out privileges all day!*

The Golf Center is one of three golf facilities operated by the Park District:

Our par-3, 18-hole **Lake Park Golf Course** is located at 1015 Howard Avenue, just west of Lee Street. 847-391-5730.

Mountain View Mine, an 18-hole adventure mini-golf course, featuring an old-time mining theme, is located within the Mountain View Adventure Center at 501 E. Algonquin Road. 847-391-5733. [Map & Directions](#).

Golf Center Hours**September 1–October 31**

Driving Range and Short Game: Daily, 8:00am–10:00pm

Grass tees are closed on Mondays until 5pm.

Course: Mondays, noon–10:00pm; Tuesday–Sunday, 8:00am–10:00pm

November 1 – February 28

Driving Range: Daily, 9:00am–10:00pm

Course and Short Game: Daily, 9:00am–dusk

March 1–March 31

Driving Range, Short Game, and Course:

Daily, 8:00am–10:00pm

April 1–May 31

Driving Range and Short Game: Daily, 8:00am–10:00pm

Course:

Monday, Noon–10:00pm

Tuesday–Sunday, 8:00am–10:00pm

June 1–August 31

Driving Range, Short Game, and Course:

Monday–Saturday, 7:00am–midnight

Sunday and Holidays, 7:00am–10:00pm

Grass tees are closed on Mondays until 5pm.



PARKS and FACILITIES

Photos of all parks and facilities, with maps and directions, are on our website: www.DPParks.org

You'll find detailed listings of all the amenities in each park. Looking for a walking/jogging path?

Is there a great playground in your neighborhood? Bocce Ball Courts? Sì, li abbiamo!

Whether you are new to Des Plaines, or just want a new place to play, the website is your best choice to seek, find & enjoy! *See you around the parks.*

Map No.

1	Administrative & Leisure Center , 2222 Birch Street	30	Maine West High School , 1775 S. Wolf Road
2	Algonquin and Forest Schools , Algonquin Rd./Fifth St.	31	McKay-Nealis Park , 1755 S. Maple Avenue
3	Apache Park , 2100 Pine Street	32	Menominee Park , 440 Laurel Avenue, at Brown Street
4	Arndt Park , 1990 White Street, at Howard Avenue	33	Mohawk Park , 515 Lyman Avenue
5	Blackhawk Park , 190 E. Golf Road	34	Mountain View Adventure Center , 510 E. Algonquin Road
6	Bluett Park , 1408 E. Thayer Street (Mt. Prospect)	35	North Golf Cul-de-Sac Park , 975 N. Golf Cul-de-Sac
7	Central Park , 1555 E. Thacker Street	36	North School , 1789 Rand Road
8	Central School , 1526 E. Thacker Street	37	Northshire Park , 200 Fletcher Drive
9	Cherokee Park , 1260 White Street, at Van Buren Avenue	38	Oakwood Maintenance Facility , 1300 Oakwood Avenue
10	Cheyenne Park , 501 N. Wolf Road	39	Orchard Court , 560 Orchard Court
11	Chippewa Park & Pool , 197 N. Eighth Avenue	40	Orchard Place School , 2727 Maple Street
12	Cornell Park , 130 Stratford Road	41	Plainfield School , 1850 Plainfield Drive
13	Craig Manor Park , 800 Madelyn Drive	42	Potawatomie Park , 1200 Prairie Avenue
14	Cumberland Terrace , 426 S. Warrington Road	43	Prairie Lakes Community Center , 515 E. Thacker Street
15	Des Plaines History Center , 781 Pearson Street	44	Prairie Triangle , Prairie Avenue at Arlington Avenue
16	Des Plaines Manor Park , 500 LaSalle Street	45	Rand Park/Mystic Waters , 2025 Miner Street
17	DiMucci-Lowenberg Park , 400 Radcliffe Avenue	46	Seminole Park , 3000 Scott Street, at Craig Drive
18	Eaton Field Park , 2975 Craig Drive, at Patton Drive	47	Sesquicentennial Park , 255 Grove Street, at Sherman Place
19	Garden Plots , 601 S. Westgate Road	48	Sioux Park , 500 Clayton Lane
20	Golf Center Des Plaines , 353 N. River Road	49	South Golf Cul-de-Sac , 975 S. Golf Cul-de-Sac
21	Hawaii Park , 665 Polynesian Drive	50	South School , 1535 Everett Avenue
22	Hoffman Park , 740 Hoffman Parkway, at W. Villa Drive	51	Terrace School , 735 S. Westgate Road
23	Horseshoe Triangle , Wolf Road at Greenvew Avenue	52	Teton Park , 520 State Street
24	Iroquois Pool , 2324 Maple Street (Iroquois School)	53	Tomahawk Park , 350 S. Westgate Road
25	Jaycee Park , 1496 Wicke Avenue, at Cora Street	54	West Park , 651 S. Wolf Road
26	Kiwanis Park , 1700 Lincoln Avenue, at Orchard Street	55	Westfield Gardens Park , 955 S. Warrington Road
27	Kutchen Park , 440 State Street	56	Willow Park , 1314 Willow Avenue, at Laurel Avenue
28	Kylemore Greens Park , 900 Kylemore Drive	57	Winnebago Park , 1218 Margret Street, at Van Buren Avenue
29	Lake Park , 2200 Lee Street	58	Woodlawn Park , 875 Woodlawn Avenue, at S. Third Avenue
29	Lake Park Golf Course & Marina , 1015 Howard Avenue	59	Yale Court , 600 Yale Court, at Eighth Avenue



Opening Doors • Closing Deals

847.208.1397

Connie@ConnieDornan.com

Visit my website www.ConnieDornan.com for all my current and upcoming listings
& additional real estate news

TOP 1% INDIVIDUAL BROKER IN THE NORTH SHORE AND IN COOK COUNTY
2019, 2018, 2017, 2016, 2015, 2014*

TOP 1% IN STATE OF ILLINOIS BY REAL TRENDS
2019, 2018, 2017, 2016, 2015**

NAMED ONE OF CRAIN'S CHICAGO BUSINESS' NOTABLE RESIDENTIAL REAL ESTATE BROKERS
2019 & 2018***



*Top 1% ranking based on closed sales volume in the North Shore and Chicago area, all companies. Based on information from MRED LLC for the period 01/1/2014-12/31/19. **Top 1% in State of Illinois by Real Trends 2015-2018. This data is informational and cannot be guaranteed accurate. Data maintained by MRED LLC may not reflect all real estate activity in the market
***Awarded by Crain's Chicago Business as one of their 2018 & 2019 Notable Residential Real Estate Brokers.